

Delphi 2005

- NEW! "All-in-One" Delphi Win32, Delphi .NET, C# : IDE

Borland Delphi2005

RAD

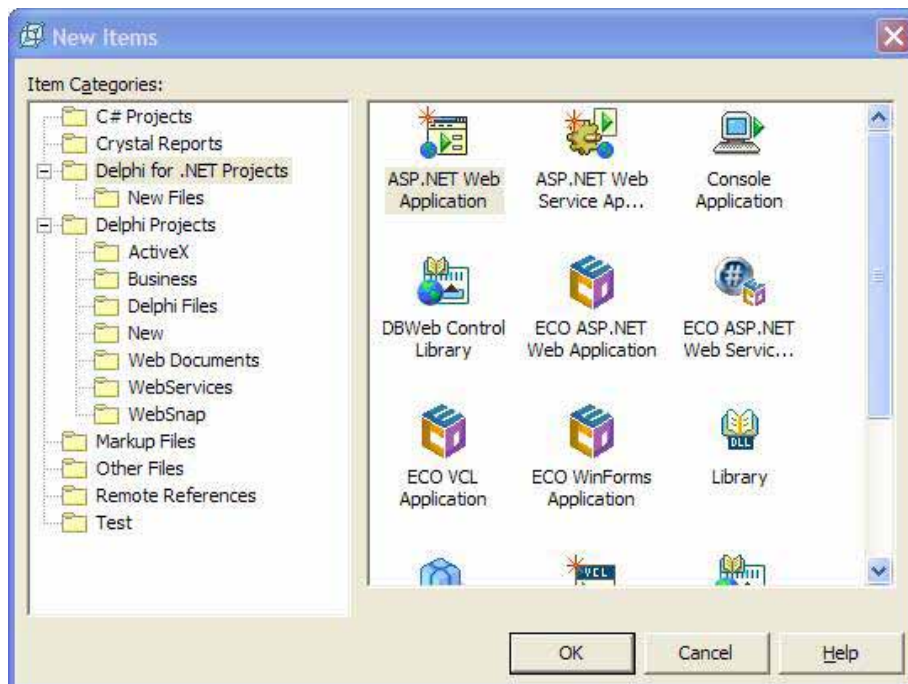
Windows RAD

SDK

.NET , Win32, ASP.NET , VCL.NET ,
VCL , SDK Delphi C# , Delphi2005

Delphi2005 VCL Win32, VCL.NET
Win32

.NET

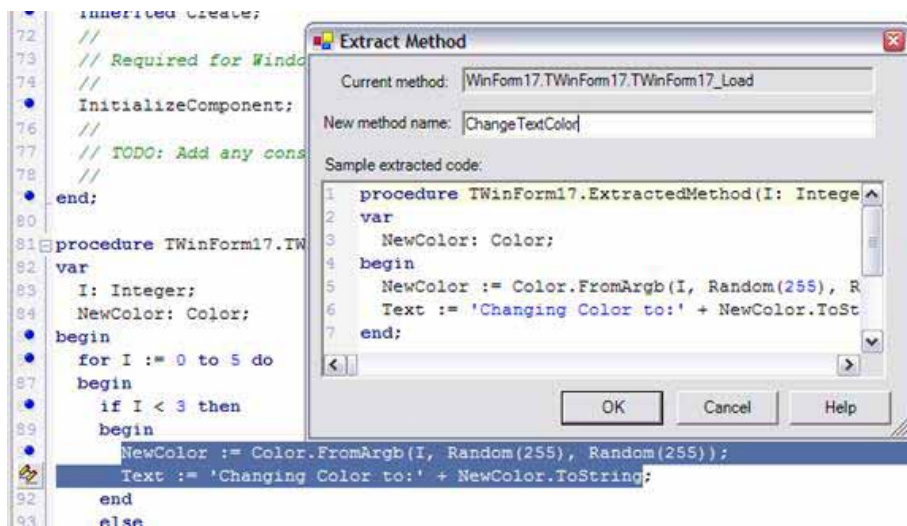
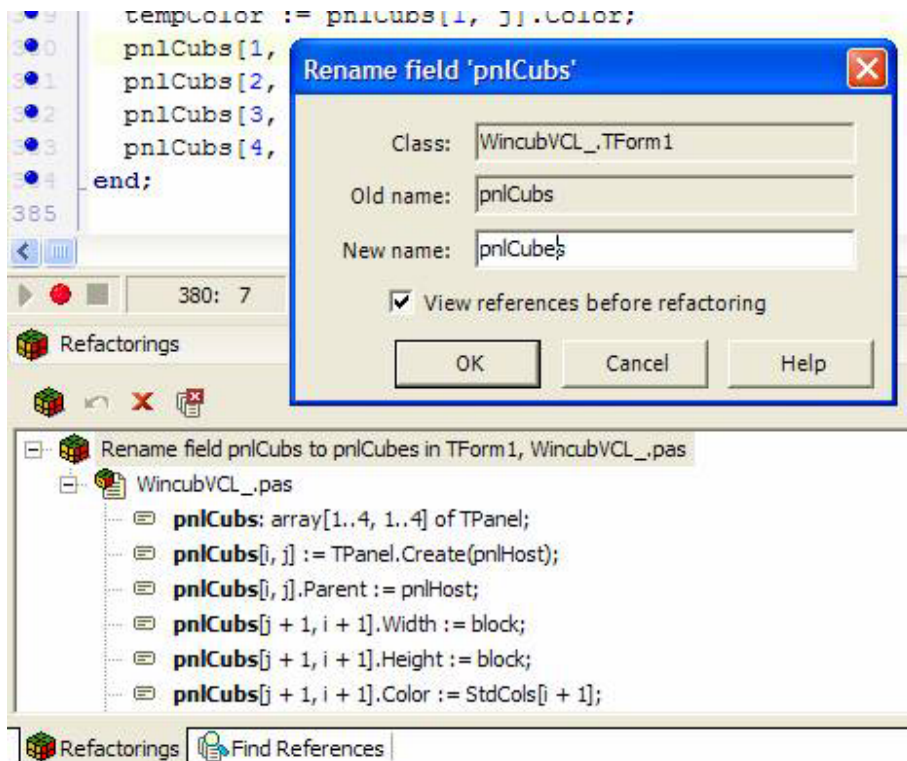


IDE : Delphi C# Win32 .NET

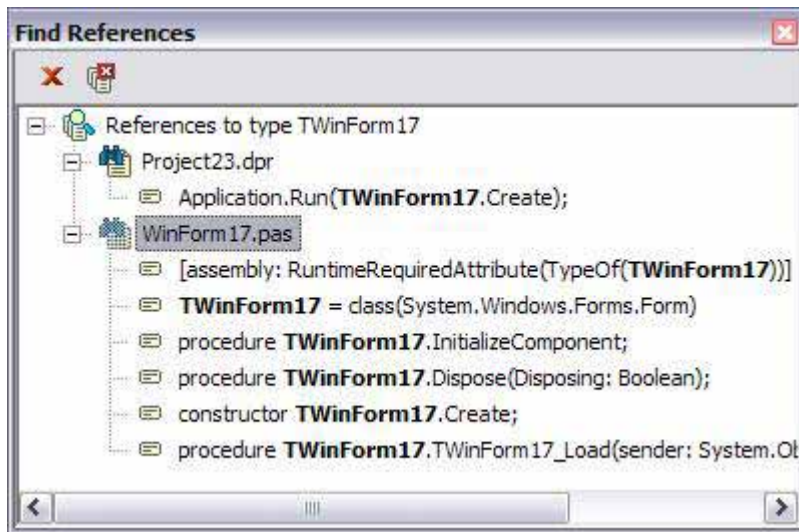
- NEW!

가 (Extract Method), (,),
(Extract Resource String) 가
Delphi C# , fields, methods, variables,
properties, types ,
variable, field property ;

localization



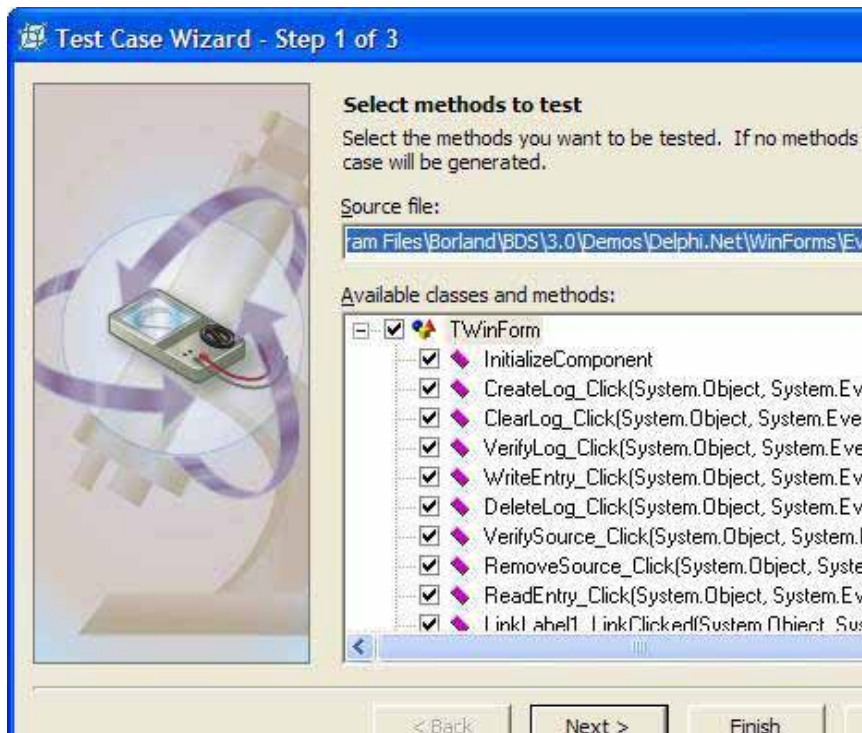
(Extract Method):



Delphi2005

- NEW!

Delphi C# Test
 Cases Test Suites , Test Runner Unit Tests
 .NET C# Delphi NUnit
 Delphi Win32 DUnit 가



Test Case Wizard : Win32 .NET

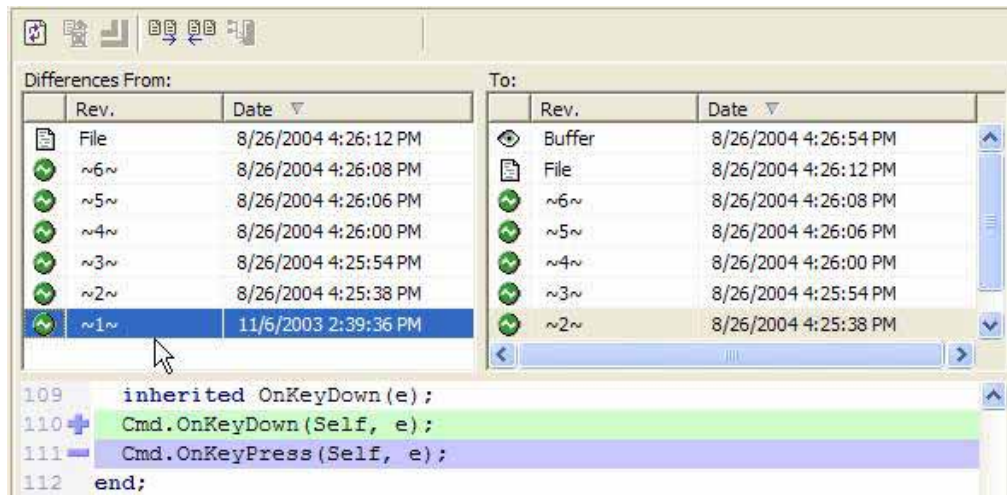
Unit Test

- NEW!

Delphi2005

Borland

StarTeam



History Manager : StarTeam

- NEW! Delphi

Delphi2005

.NET

Win32

"For..in.."

For

.NET

Win32

Delphi

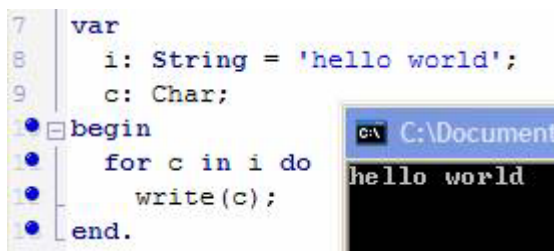
Multi Unit Namespaces

UTF8

.NET

Delphi 가

.DCPILs



Delphi language - "For in"

```

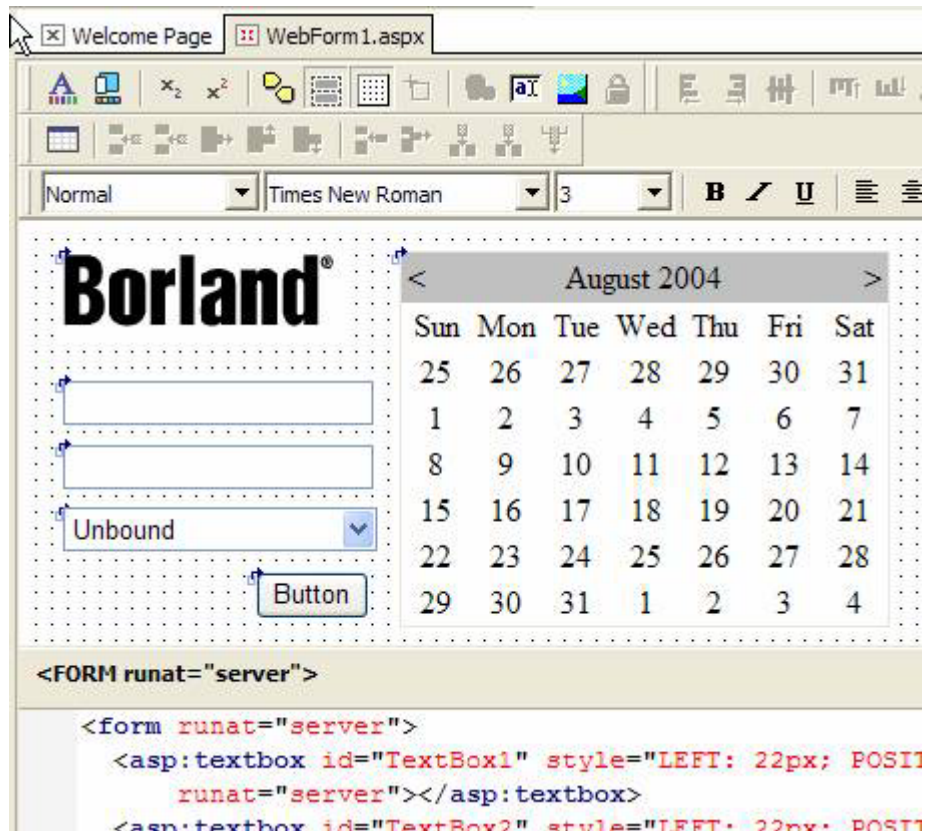
1  unit Unit1;
2  interface
3  uses
4    Borland.Vcl.*;
5  type
6  TForm1 = class(TForm)
7  private
8    / Private declarations /

```

Delphi now supports .NET multi-unit namespaces

- Enhanced! Win32 and .NET RAD

Win32 .NET HTML
 XML LiveTools
 WebForms ASP.NET (built) HTML
 e- Delphi2005 ASP.NET
 Win32 .NET RAD
 "AtoZed IntraWeb"

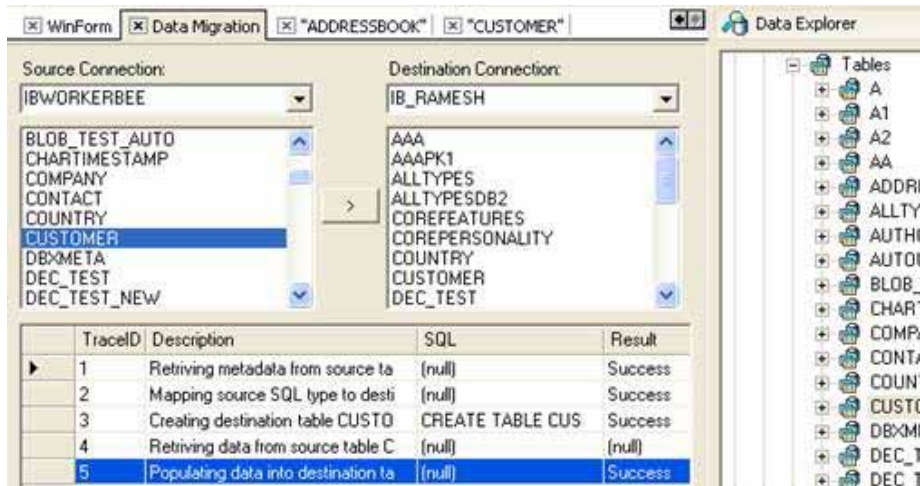


ASP.NET and IntraWeb : .Net Win32

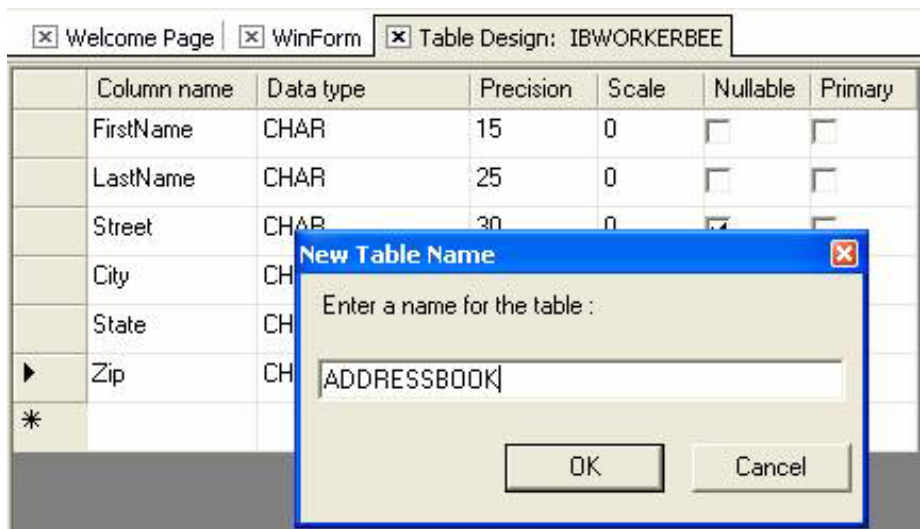
- NEW! Delphi ADO.NET

Delphi2005 GUI , Services
 ADO.NET .ADO.NET Borland Data
 Provider (BDP) 가
 - SQL

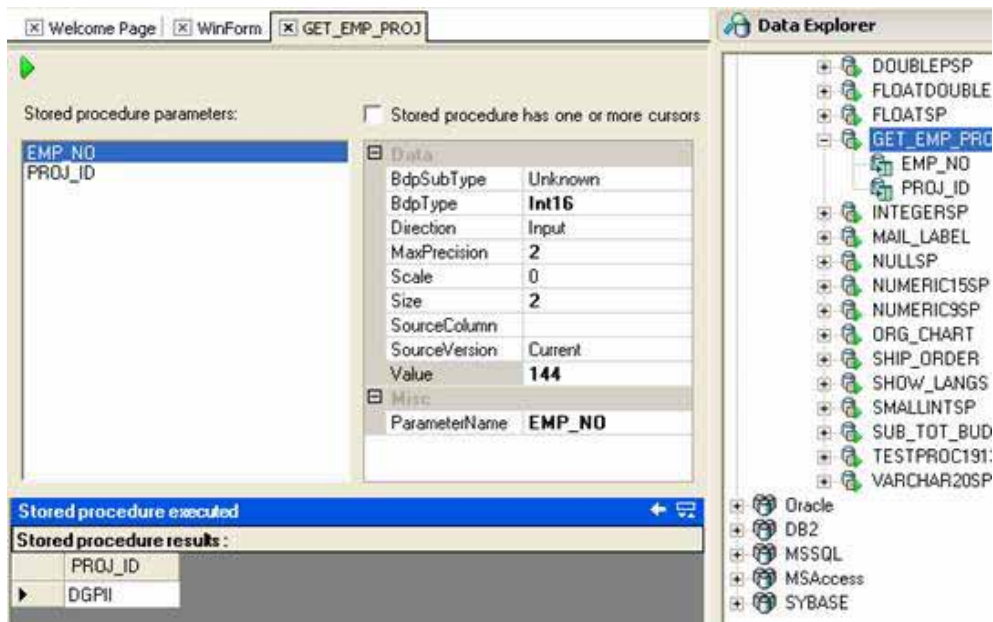
Server , , Borland InterBase , IBM DB2 Sybase
 / ADO.NET
 dbHub , dbSync RemoteServer
 Database Explorer



Delphi2005's : ADO.NET Data Migration tool



ADO.NET Database Explorer r:



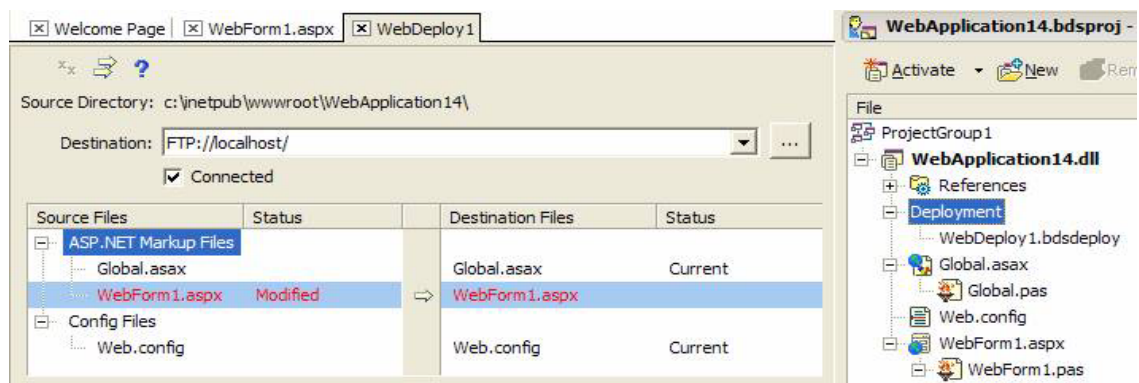
ADO.NET Database Explorer:

- NEW!

Delphi2005

. ASP.NET Intraweb

. FTP Xcopy 2가



Deployment Manager : Web

- NEW! ECO II OR (Object/Relational) Mapper ECO

Delphi 2005 ECOII(Enterprise Core Objects II)

. ECOII

Web Services , ASP.NET , WebForms WinForms

Enterprise Core Objects (ECO) OR

/

ECO

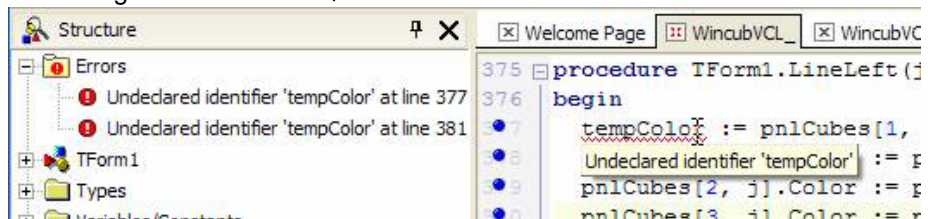
- **New! Sync-Edit** :

```

begin
  lblStep2.Caption := steps.ToString;
  complet := ifComplett;
  btnShuffle.Enabled := (complet = 1);
  lblComplett.Visible := (complet = 1);
end:

```

- **New!** / 가
- **New! Error Insight** : 가



- **New! Help Insight** –

```

Log.SourceExists('Source1');
' + sourceExists.ToString));

System.Object; e:

NewLog1') then
wLog1');

: System.Object; e: System.EventArgs);

```

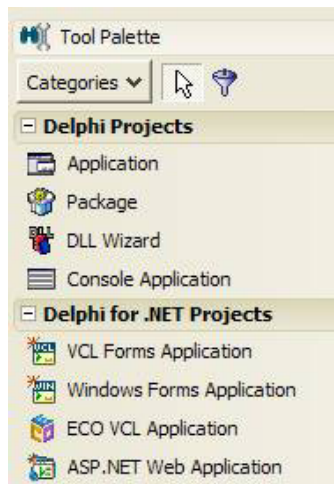
Boolean.ToString Method

Converts the value of this instance to its equivalent string representation.

Returns

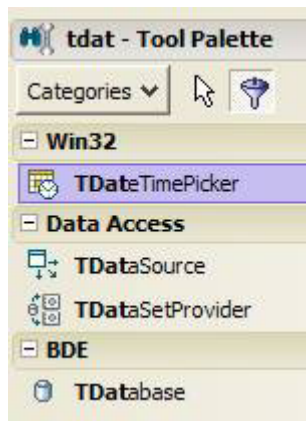
[System.Boolean.TrueString](#) if the value of this instance is **true**, or [System.Boolean.FalseString](#) if the value of this instance is **false**.

- **New! Structure View** - Delphi2005 IDE
- **New! Gallery Palette** –



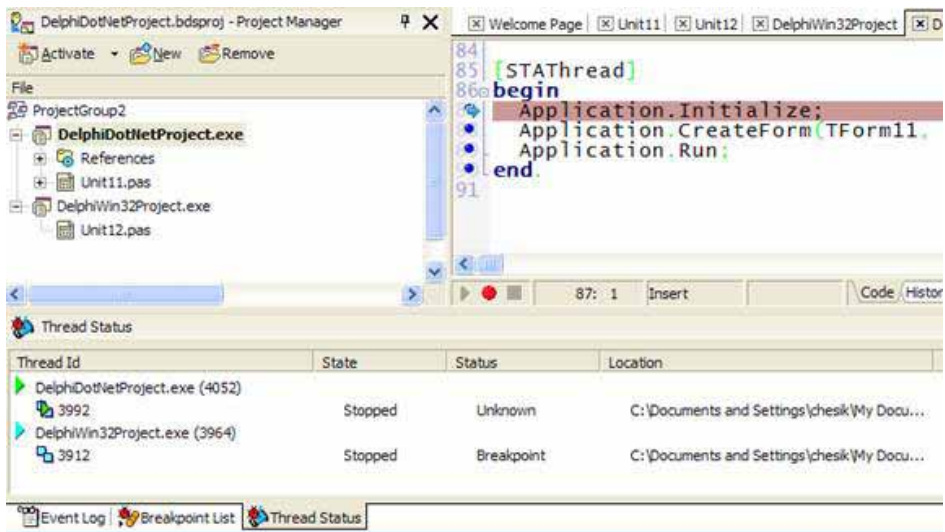
- **New!**

가

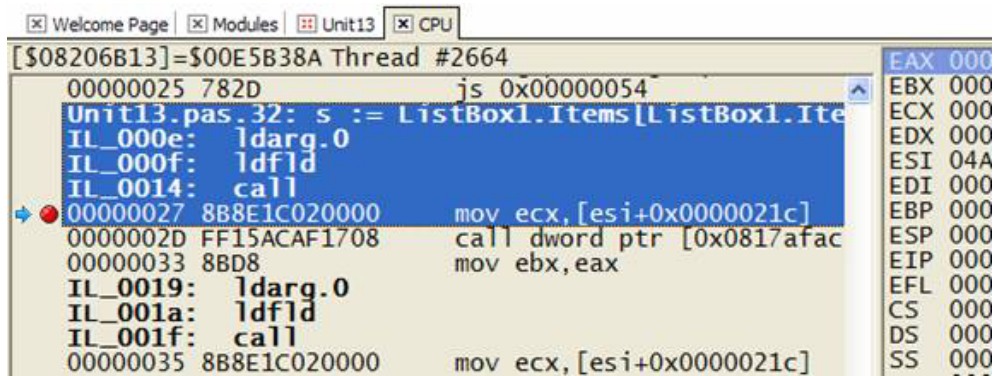


- **New!**

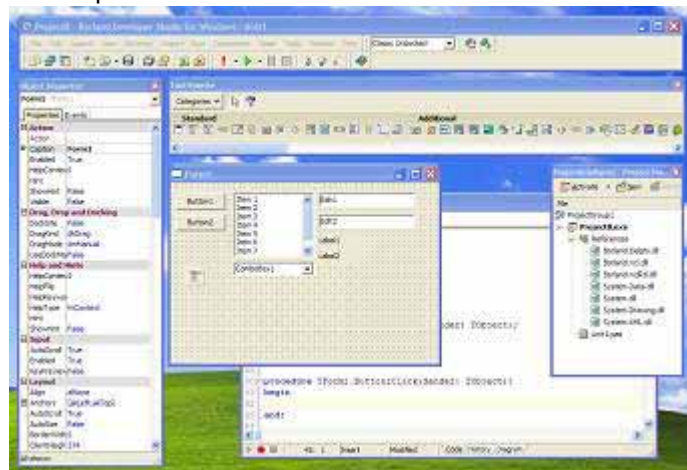
, Win32/.NET



- **New! .NET** IntermediateLanguage



- **New!** Delphi “ ” VCL



- **New!** Virtual Library Interfaces – DLL

